



APEX HOTELS

[apexhotels.co.uk](http://apexhotels.co.uk)

# APEX CITY OF BATH HOTEL

BATH'S PREMIER CONFERENCE VENUE

James Street West, Bath BA1 2DA

T 01225 418 501

E [bath.enquiries@apexhotels.co.uk](mailto:bath.enquiries@apexhotels.co.uk)

# BATH

In Summer 2017, Apex Hotels opens in Bath. The new purpose-built hotel will act as the premier conference centre in this creative, UNESCO World Heritage city.



For bookings & enquiries please contact | T 01225 418 501



BRISTOL AIRPORT: 40 MINUTE DRIVE  
LONDON: 90 MINUTE DRIVE

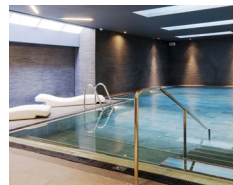
# HOTEL FEATURES

This premier business hotel is nestled in the city centre just a 10 minute walk from Bath Spa train station. The contemporary design, modern technology and personalised service make your visit to this hotel stress-free.

## HOTEL FEATURES

- Bath's largest purpose-built conference and events spaces for up to 400 delegates
- Complimentary high-speed Wi-Fi & local calls
- 177 spacious bedrooms, some with balconies and city views. Rooms feature modern design, full Sky TV package, luxurious Elemis toiletries and your exclusive Apex duck
- Stylish and bright Restaurant & Bar with terrace
- 24-hour gym and swimming pool

For bookings & enquiries please contact | T 01225 418 501



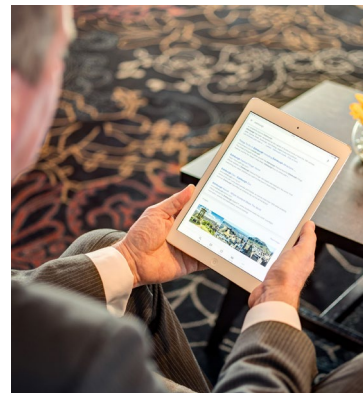


# CONFERENCE INFO & TECHNOLOGY

This conference centre has some of the largest conference spaces in the city. Each of the rooms are flexible and adaptable to your needs. Rooms are available with at least seven set-up options plus adjoining rooms and break out space.

Every room is designed with you in mind. You'll find the latest technology including high-speed Wi-Fi, TVs, audio and conference calling. The expertise of our event planning team will ensure you're prepared and every detail is thought of.

For bookings & enquiries please contact | T 01225 418 501



# CONFERENCE, MEETINGS & PRIVATE EVENTS

## CONFERENCE & EXHIBITIONS

These conference spaces are extensive and adaptable. From exhibitions for up to 400 people and large training sessions, presentations or product launches there are spaces to suit. The main suite has a dedicated entrance and access road for deliveries. Packages are available with full event planning service and catering options included.

## MEETINGS

We have six medium-sized meeting rooms to choose from. Each is perfect for meetings, training days or informal brainstorm, boardroom meetings and a variety of other business needs. You'll find them well-equipped with technology, break out space and full catering service available.

## PRIVATE EVENTS & DINNER DANCE

Private events come to life at Apex Hotels. Choose from a variety of options to suit your party size and we'll do the rest. There are seven set-ups available including cabaret, private dining or reception. From dinner dances and private dining to celebrations like graduations, birthdays, anniversaries or weddings, our experienced event planning team are on hand to help.



Please note - images are for reference only.

For bookings & enquiries please contact | T 01225 418 501

# ROOM CAPACITIES

## CONFERENCE ROOM

ROOM CAPACITIES SUBJECT TO CHANGE

	THEATRE	BOARDROOM	U SHAPE	CABARET 6' ROUNDS	PRIVATE DINING 6' ROUNDS X12 PERSON	DINNER/ DANCE	RECEPTION
LANSDOWN SUITE	400	-	-	180	300	250	400
LANSDOWN SUITE 1	180	60	50	72	132	100	-
LANSDOWN SUITE 2	200	60	50	72	144	110	-

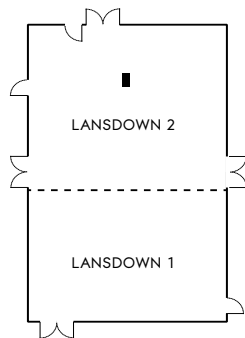
## MEETING ROOMS

	THEATRE	CLASSROOM	BOARDROOM	U SHAPE	CABARET 6' ROUNDS	PRIVATE DINING 6' ROUNDS X12 PERSON
KINGSMEAD	80	39	34	34	40	50
KINGSMEAD 1	28	15	12	14	8	10
KINGSMEAD 2	52	24	16	16	32	40
WALCOT	50	30	20	20	32	40
BATHWICK	-	-	16	-	-	-
WIDCOMBE	-	-	16	-	-	-
CAMDEN	50	30	20	20	32	40



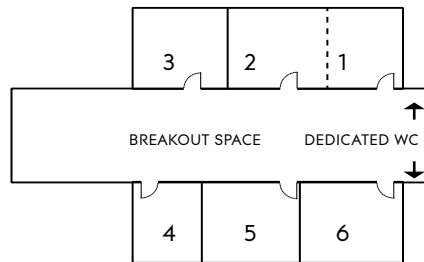


# FLOOR PLANS



STREET ACCESS ENTRANCE  
CONFERENCE ROOM

**LANSDOWN SUITE:** 25.1 x 14.5m (3.7m high)  
**LANSDOWN 1:** 11.6 x 14.5m (3.7m high)  
**LANSDOWN 2:** 13.4 x 14.5m (3.7m high)



## MEETING ROOMS

**1 & 2, KINGSMEAD:**

12.2 x 6.8m

**1, KINGSMEAD 1:** 4.8 x 6.8m

**2, KINGSMEAD 2:** 7.3 x 6.8m

**3, WALCOT:** 6.8 x 6.8m

**4, BATHWICK:** 5.3 x 6.9m

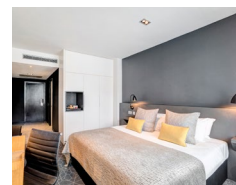
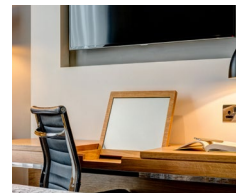
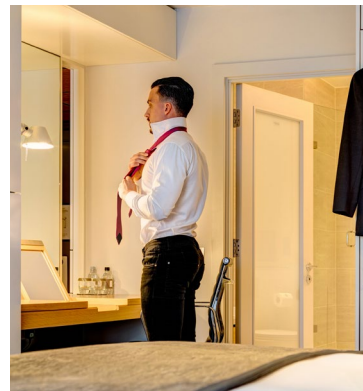
**5, WIDCOMBE:** 5.5 x 6.9m

**6, CAMDEN:** 6.8 x 6.9m



For bookings & enquiries please contact | T 01225 418 501

DRAWINGS NOT TO SCALE





For bookings & enquiries please contact  
[bath.enquiries@apexhotels.co.uk](mailto:bath.enquiries@apexhotels.co.uk)  
T 01225 418 501

@ApexHotels

